

A
B
C
D
E
F
G
H
I
J
K
L
M

A B C D E F G H I J K L M N O P Q R S
 T U V W X Y Z A A B B V A B K B A
 C A B B A C B B C D D B B B C T M U U
 G X P W V U T E A R T T S Z S O B R D E E
 F O M O R P T A C R D A E F E E E E
 H E I H D R E C H D H E E E C E E A O I
 U Y H B D A P O L I
 P H G M E B D W W A H O P S
 W T P V U W T E H S
 B O S G I U W E E E H
 X A H E E E E E E A
 R O T E O (O) P O W E E T
 M O T D () S H O P
 T H P E H A S D H G
 H E E E E O H B I M O H E B I W E
 H V E E E E E E A E E E E E D E
 E Z H E E E Z A H E D H E E H
 H E E A E E O P R T E H V W X Y Z
 P Q R S T U V W X Y Z A B C D E F G
 H I J K L M N O P Q R S T
 U V W X Y Z U E O T H R O U S E E E S S

R I S D

A AXILLARY



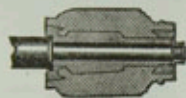
Axis 171R-MN



Axillary
218R-MN



Axolotl 94R-MN



Axle Box (Wagon Hub)
217R-MN



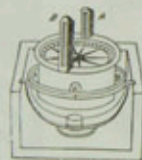
Awl 13587-ML



Shoemaker's Awl 209R-W4



Aye-aye 92R-MN



Azimuth Compass
211R-W4



Avocet 401R-MN



Azure
212R-WI

M

BADGER

Bb



Ba 13450-ML



Babiroussa 297R-M



Baboon 852R-MN



Badger 812R-WN



Badger 298R-MN



Plumule
2590R-W4



Poachard 2853R-MN
(*Aythya americana*)



Pocket Knife 8700-M



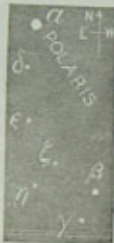
Pocket Knife 2592R-W4
A Scale; B Spring; C Tang
of blade; D Kick



Pocket Gopher 2477R-MN
(*Geomys bursarius*)



Plum Gouger
2786R-MN
(*Coccotorus
scutellaris*)



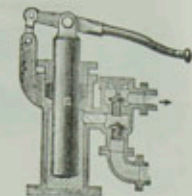
Polaris
5574R-M



Pod 2593R-W4



Plumb Rule
2851R-MN



Plunger Pump 2852R-MN



Pointing Apparatus
6905R-M



Pointer 2478R-MN



Plug Tap 3462R-MN



Pluto Monkey
(*Cercopithecus pluto*)
2825R-MN



Polybranchia 2734R-MN



Plume Moth
2811R-MN
(*Oxyptilus
pericelidac-yllus*)



Polecat 2804R-MN
(*Putorius foetidus*)



Poison Ivy
1611-MN



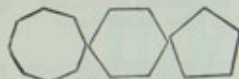
Poison Ivy
(*Rhus toxicodendron*)
2683-WN



Poison Sumac
(*Rhus venenata*)
2745R-MN



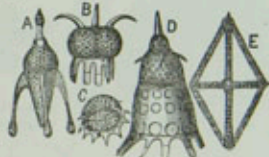
Podura 2645R-MN
(*Podura villosa*)



Polygons 2596R-M4

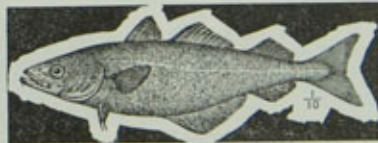


Poleax
25R-M4



Polycystina 2735R-MN

A *Rhopalocanium ornatum*; B *Petalospiris
diabolicus*; C *Halicalyptra fimbriata*;
D *Pterocodon campana*; E *Stephanastrum
rhombus*



Pollock (*Pollachius carbonarius*) 1750-WN