

Jan 18th, 7:00 PM - 9:00 PM

2022 MLK Keynote Address: Eddie Glaude Jr. Pre-Event Presentation

Center for Social Equity & Inclusion
Rhode Island School of Design, sei@risd.edu

Eddie Glaude, Jr.

Follow this and additional works at: https://digitalcommons.risd.edu/studentaffairs_MLK

 Part of the [African American Studies Commons](#), [African History Commons](#), [African Studies Commons](#), [American Studies Commons](#), [Art Education Commons](#), [Bilingual, Multilingual, and Multicultural Education Commons](#), [Business Law, Public Responsibility, and Ethics Commons](#), [Civic and Community Engagement Commons](#), [Civil Law Commons](#), [Civil Procedure Commons](#), [Civil Rights and Discrimination Commons](#), [Critical and Cultural Studies Commons](#), [Cultural History Commons](#), [Curriculum and Social Inquiry Commons](#), [Diplomatic History Commons](#), [Ethics and Political Philosophy Commons](#), [Ethnic Studies Commons](#), [Gender, Race, Sexuality, and Ethnicity in Communication Commons](#), [Human Rights Law Commons](#), [Inequality and Stratification Commons](#), [Intellectual History Commons](#), [International and Intercultural Communication Commons](#), [Peace and Conflict Studies Commons](#), [Policy Design, Analysis, and Evaluation Commons](#), [Policy History, Theory, and Methods Commons](#), [Political History Commons](#), [Politics and Social Change Commons](#), [Public Administration Commons](#), [Public History Commons](#), [Rhetoric Commons](#), [Social and Cultural Anthropology Commons](#), [Social and Philosophical Foundations of Education Commons](#), [Social History Commons](#), [Social Influence and Political Communication Commons](#), [Social Policy Commons](#), [Social Psychology and Interaction Commons](#), [Sociology of Culture Commons](#), and the [United States History Commons](#)

Center for Social Equity & Inclusion and Glaude, Eddie Jr., "2022 MLK Keynote Address: Eddie Glaude Jr. Pre-Event Presentation" (2022). *Martin Luther King, Jr. Series*. 16.
https://digitalcommons.risd.edu/studentaffairs_MLK/Keynotes/Presentations/16

This Event is brought to you for free and open access by the Student Affairs at DigitalCommons@RISD. It has been accepted for inclusion in Martin Luther King, Jr. Series by an authorized administrator of DigitalCommons@RISD. For more information, please contact mpompeli@risd.edu.

A black and white portrait of Martin Luther King Jr. looking upwards and to the left. The image is overlaid with graphic elements: a vertical orange bar on the far left, a thin red vertical line, a large teal shape with a white jagged border, and a white jagged shape on the right side of the portrait.

RISD MLK

Celebration
Service
Learning
Inspiration



Dr. Eddie Glaude

RISD 2022 MLK Keynote and Honoree



“We have to become better people by fundamentally transforming the conditions of our living together. This will require setting aside our comforting illusions.”

— Dr. Eddie Glaude



MLK Day of Service



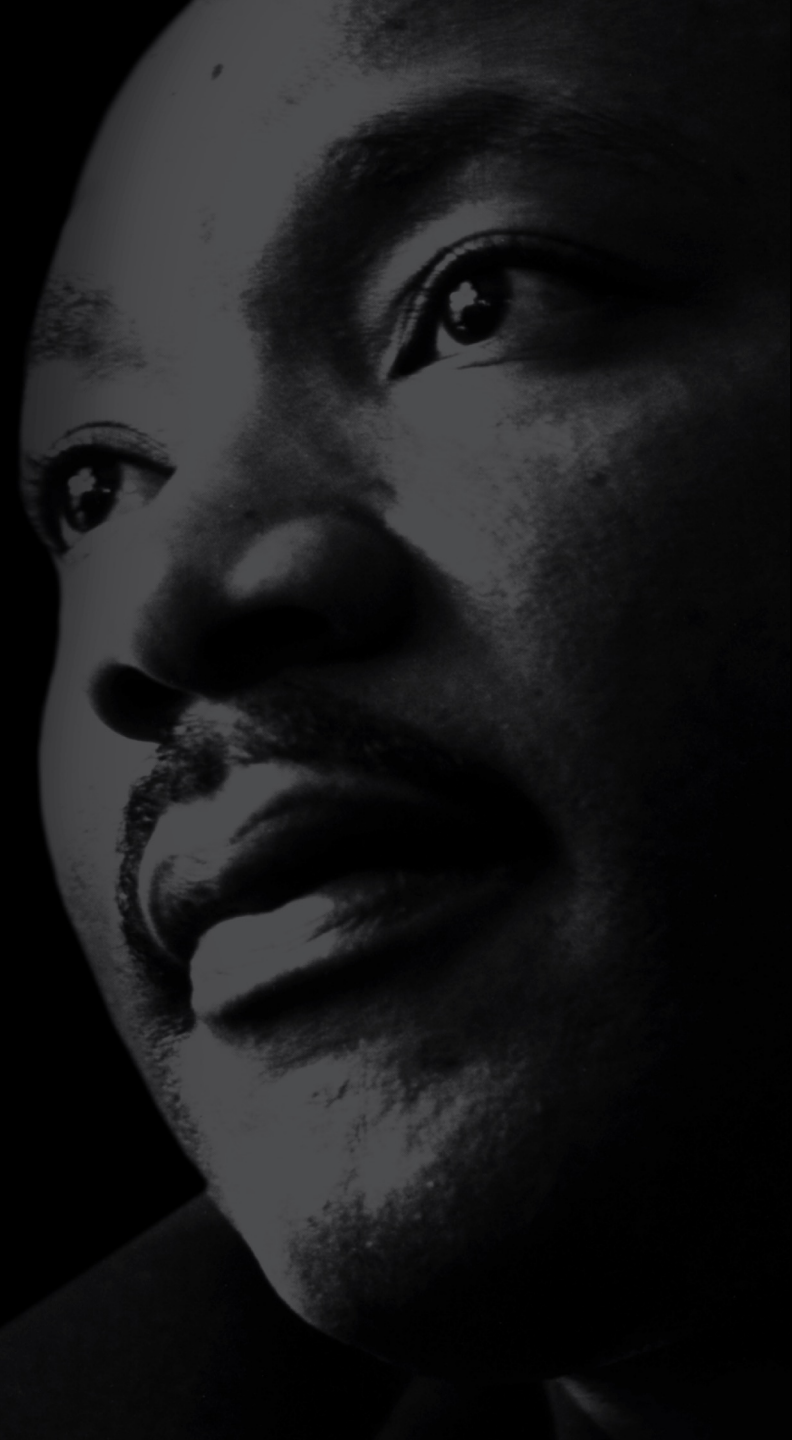


Photographer Richard Ross
Juvenile in Justice
RISD MLK '14

MLK Series

The Rev. Dr. Martin Luther King, Jr. Series (MLK Series) is produced by Rhode Island School of Design to acknowledge the life and vast contributions of Dr. King toward creating a more just and democratic society. Throughout the year, the RISD community hosts the MLK Series programs, events, and workshops that provide the RISD and local community with impactful moments of service, reflection, self-development, inspiration, and celebration.

The MLK Series Keynote Lecture serves as the centerpiece of the MLK Series and aims to highlight the role of creative endeavor in advancing democracy and equity. It acknowledges an individual whose legacy of service and commitment to justice, has made an indelible difference.



“Hope is invented every day.”

— James Baldwin



RISD MLK '19 Keynote
Cornel West





MLK Day of Service



Photographer Richard Ross
Juvenile in Justice
RISD MLK '14

A photograph of a protest with a large banner that reads "BLACK LIVES MATTER". The banner is held by several people. In the background, other protesters are visible, some wearing masks. The scene is outdoors on a grassy area. The entire image has a teal color overlay.

**BLACK
LIVES
MATTER**

A quote by Dr. Eddie Glaude is presented on a white, torn-edge paper strip. A hand-drawn black arrow points from the left towards the quote. The quote reads: "As it stands, we don't really talk frankly about race. And too many people are too damn scared to say so."

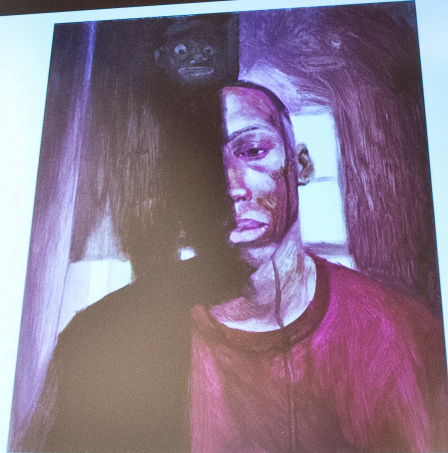
“As it stands, we don't really talk frankly about race.
And too many people are too damn scared to say so.”

– Dr. Eddie Glaude



Emory Douglas
Isms Panel at Metcalf Auditorium

Brandon Simmons
Virgin Sambo
Oil on canvas
14 x 12 in.





Andrew Young
RISD MLK '16 Keynote

RISD MLK '13 Keynote
Harry Belafonte



“We have to find and rest
in a community of love.”

— Dr. Eddie Glaude





MLK Celebration Concert '15

Marian Wright Edelman
RISD MLK '14 Keynote





Photographer Richard Ross
Juvenile in Justice
RISD MLK '14



“Not everything is lost.
Responsibility cannot be lost,
it can only be abdicated. If
one refuses abdication, one
begins again.”

— Dr. Eddie Glaude



Emory Douglas
RISD MLK '17 Keynote



The Presidential Inauguration at Portfolio Café
RISD MLK '17



The 2022 MLK Keynote Lecture is possible through the support of many RISD offices, departments, and people. The Center for Social Equity and Inclusion and the Office of the President thank the following for their partnership toward this year's event.

Campus Exhibitions

Intercultural Student Engagement

Izzy Productions

Janette Chi, Included by Favor

Katryn Livingston, Events & Communications, Project Manager

Media Group

Media Resources

Public Safety

Rene Payne, Included by Favor

RISD Color Lab

RISD Facilities

RISD Museum

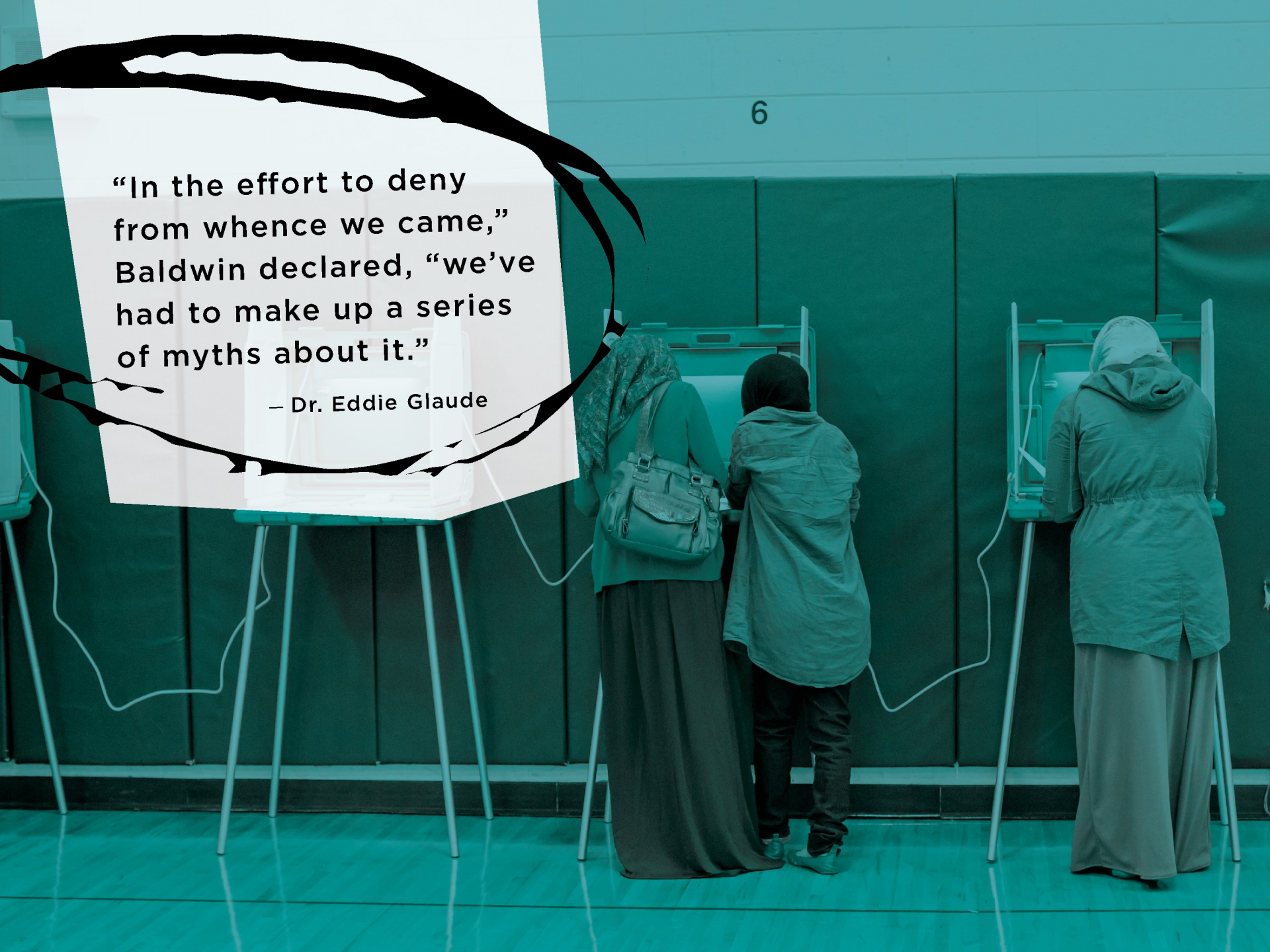
RISD Store

Vitoria Byrne AP '23

“In the effort to deny
from whence we came,”
Baldwin declared, “we’ve
had to make up a series
of myths about it.”

– Dr. Eddie Glaude

6





Photographer Richard Ross
Juvenile in Justice
RISD MLK '14



Danny Glover
Student Art Show '15



MLK Day of Service



WE SHALL
OVERCOME



“How, what, and who we celebrate reflects what and who we value, and how we celebrate our past reflects ultimately who we take ourselves to be today.”

— Dr. Eddie Glaude



Roxane Gay
MLK '18 Reception Discussion



RISD MLK '19 Keynote
Cornel West

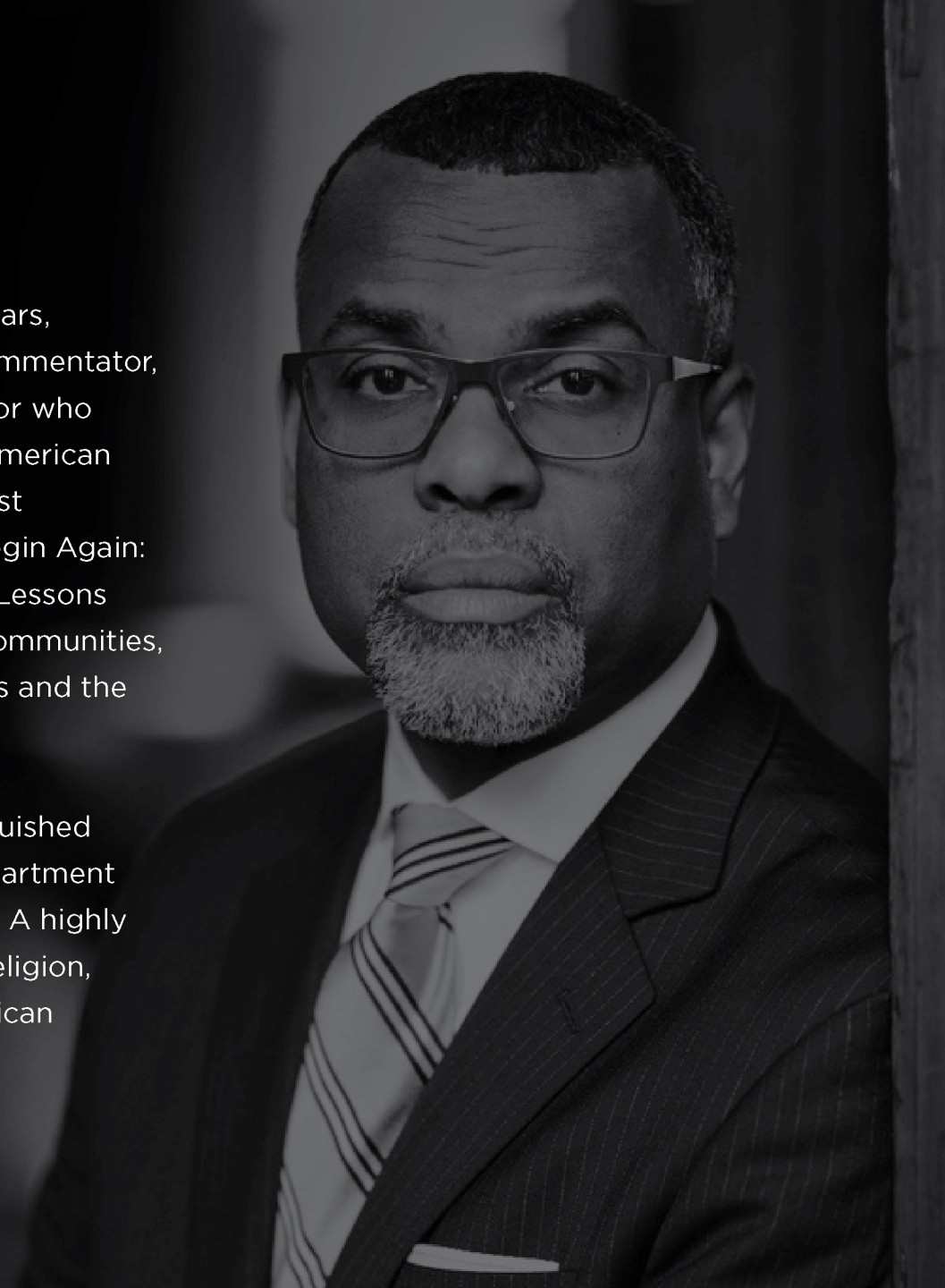


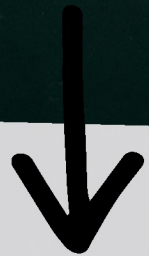
Michelle Alexander
RISD MLK '20 Keynote

MLK Honoree/Keynote

One of the nation's most prominent scholars, Eddie Glaude, Jr. is an author, political commentator, public intellectual and passionate educator who examines the complex dynamics of the American experience. His writings, including his most recent—the New York Times bestseller *Begin Again: James Baldwin's America and Its Urgent Lessons for our Own*—take a wide look at Black communities, the difficulties of race in the United States and the challenges we face as a democracy.

Glaude is the James S. McDonnell Distinguished University Professor and Chair of the Department of African American Studies at Princeton. A highly accomplished and respected scholar of religion, Glaude is a former president of the American Academy of Religion.





“What we put in
and leave out of
our stories tells us
something about
who we are.”

– Dr. Eddie Glaude

@ LucidTraveler_Art
Cash: \$Kendel91
APP: Venmo: \$KendelJoseph

Credits:

Music

“Glory” by Common and John Legend

“Undeclared” by Infinity Song

“I Wish I Knew How It Would Feel to Be Free” by Nina Simone

“I JUST WANT TO LIVE” by Keedron Bryant

“Wake Up Everybody” by Toby Nwigwe

Images

David Grossman / Alamy Stock Photo

David O' Conner / MLK Event Photography

Jim West / Alamy Stock Photo

Richard Ross / *Juvenile in Justice* Photography