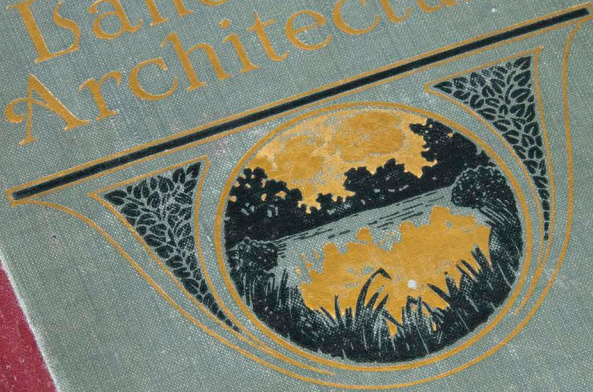


The Art
of
Landscape
Architecture



By
Samuel Parsons

The Art of Landscape Architecture

Its Development and its Application to
Modern Landscape Gardening

By

Samuel Parsons

Fellow of the American Society of Landscape Architects
Author of "Landscape Gardening," etc.

With 48 Illustrations

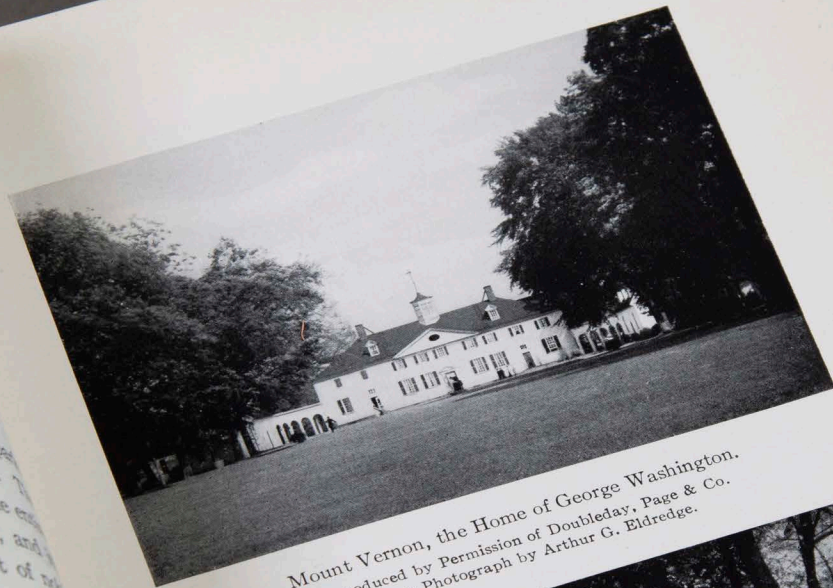
G. P. Putnam's Sons
New York and London
Knickerbocker Press

Architecture

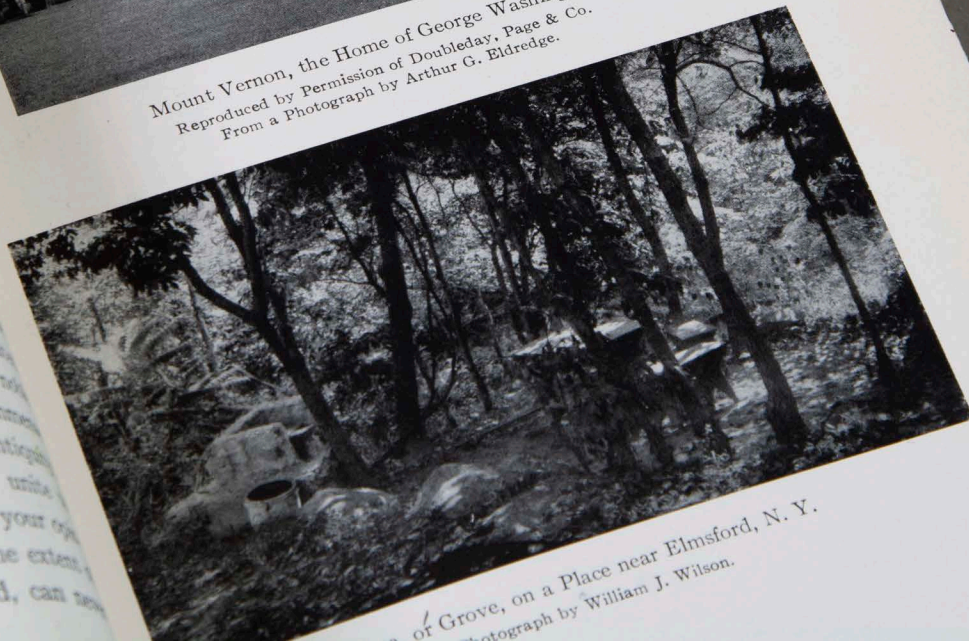
a best of themselves, which
Why do you take such pains
for your park? You see to your
and shrubberies, to your trees
you meant to make an orchard
pasture land of the other, but becom
d beauty in all that is goodly in wa
nd slope, brought all together by
and grouped into one whole."

important illustration of laying out
the world-famed Windsor Castle. The
u on which it stands dominates the en
country and yet it rests easily, and
preserves its dignity in the midst of
extended in all directions. Prince Pa
au visited England about 1826, and presen
rds of his visit in letters to his wife, the
the following extracts are made:

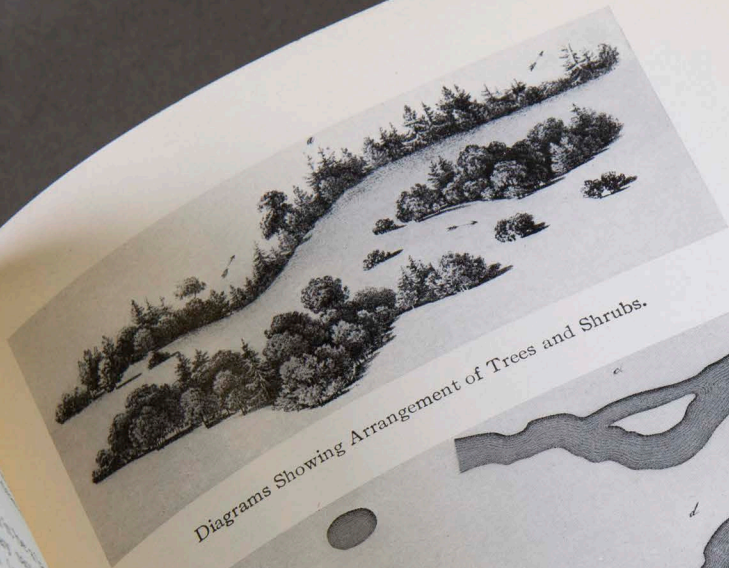
The grandeur and magnificence of the
e truly worthy of the King of England. Situa
n a hill above the town, while it presents a
object from every side, its position gives it an immen
advantage. Its historic interest, its high antiquit
its astonishing vastness and extent unite
ngle in the world. . . . As to your
I must remark that the extent
properly rounded, can



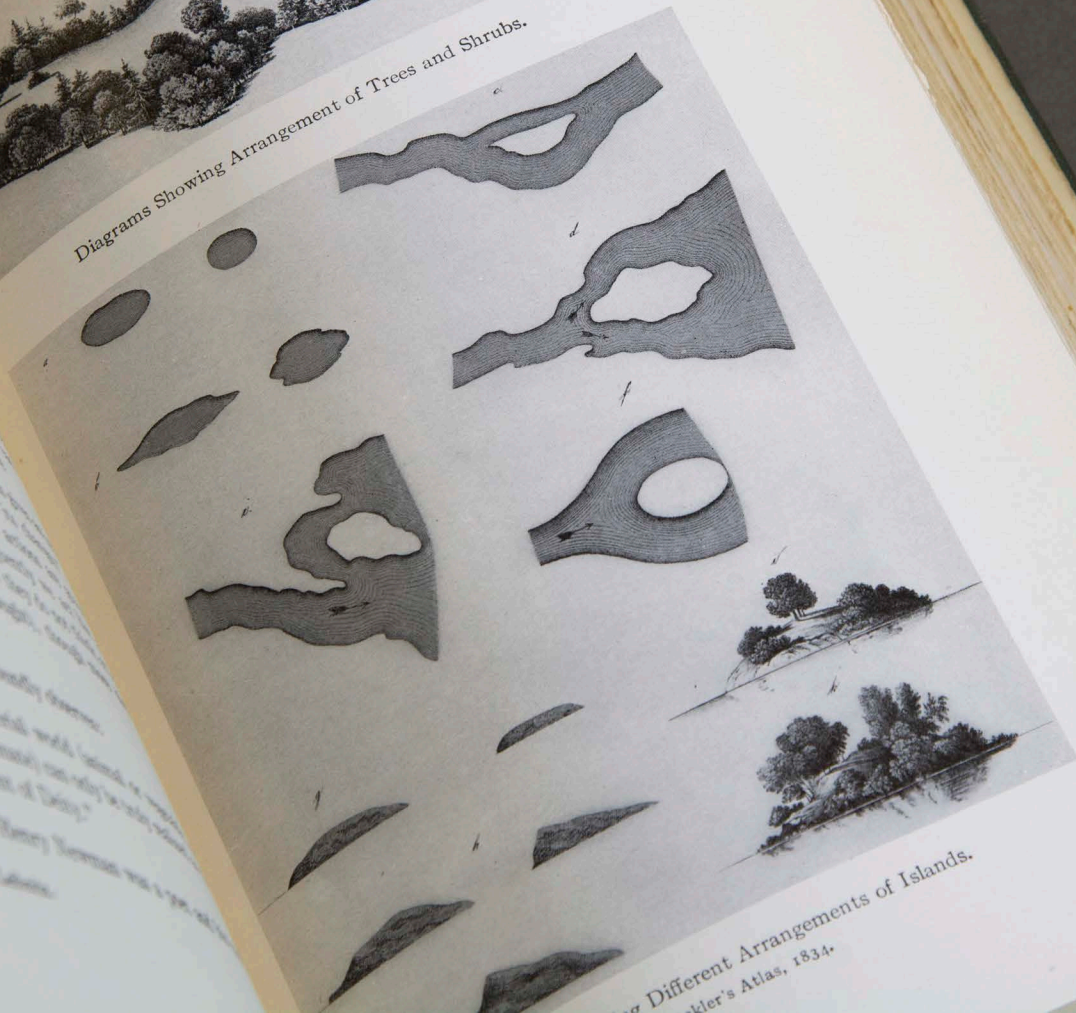
Mount Vernon, the Home of George Washington.
Reproduced by Permission of Doubleday, Page & Co.
From a Photograph by Arthur G. Eldredge.



of Grove, on a Place near Elmsford, N. Y.
Photograph by William J. Wilson.



Diagrams Showing Arrangement of Trees and Shrubs.



Showing Different Arrangements of Islands.
Keller's Atlas, 1834.

Landscape Architecture

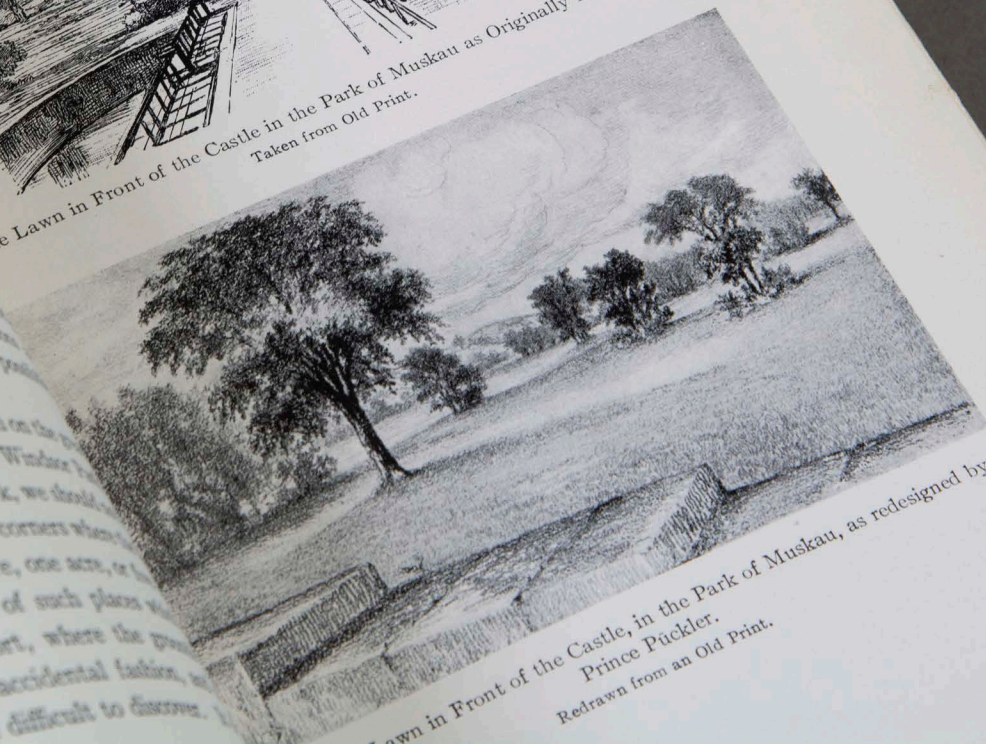
ers of the lawn large shade trees from
e. Approaching from the other and low
le you are led to the house by well-balanced
drives which are screened by trees and shrubs
of the trees and shrubs are large vegetable
gardens, very properly shut out from view.
good example of what an estate of a cultivated
gentleman should be, and is a place which
character which any man, though ever we
wish to have presented to the world as his own.

Germany, the home of landscaping in its
veloped form, presents the estate of Prince
and the Park of Babelsberg near Potsdam,
other parks in the empire, as good examples
and its proper practice. The illustration of
at Muskau affords a view of a size and extent
fine example of the best landscape gardening
plans of the front lawn of the castle as they
appeared before Prince Pückler's alterations
it now appears, illuminating as to the
skilful rearrangement.

But while we dwell with admiration on the
scape architecture of the world at Windsor
land, and Central Park, New York, we should
the small places, the nooks and corners where
stand on a quarter of an acre, one acre, or
acres. There are myriads of such places
study of an intelligent sort, where the
themselves out in accidental fashion,
are difficult to discover.



The Lawn in Front of the Castle in the Park of Muskau as Originally Laid Out.
Taken from Old Print.



Lawn in Front of the Castle, in the Park of Muskau, as redesigned by
Prince Pückler.
Redrawn from an Old Print.

