

élégance

Fashion Portfolio

Escape Plan...TRAVEL WARDROBE NO. 1

Escape Plan No.1



8409
8252

2745

8252

8252

8357

8252

Fall '72 Fashion points

- Begin with a go-everywhere wrap coat — that goes with everything. Add 2 skirts, 2 shirts, 2 vests, 2 pairs of pants (one matching) and 1 dress — all color and silhouette compatible. Take along a packable hat, pumps, clogs and ghillies... lots of pearls and beads and a clutch bag.
- A crisp smart look — shirt and vest have many uses — add plaid shirt and you have another dress. Note skinny belt for finishing touch.
- The go-everywhere No. 1 dress for Fall... wear with a vest too.
- Skirt matches coat. Add zap with a yellow vest.
- A can't-go-wrong evening combination... Long and Romantic.
- A yellow pants suit... too.

ESCAPE PLAN NO. 1

For easy travel. . .clothes do make the difference. They must be virtually wrinkle-free, lightweight, mixeable, wearable back on the home front, and most important, not look like a travel wardrobe. This takes skill and practice, but today's easy care, packable fashions take the worry out and put the comfort in — knowing that at a moment's notice you can pack a bag. . .and go.

Fashion is becoming seasonless, and in the mobile world we live in so is travel — thus our travel wardrobe reflects this. . .clothes that will take you the world over in fashion and comfort. Note how our wardrobes can be switched and mixed. . .giving super fashion mileage for around the world or through an important weekend.

NOTE: The fashion statements. . . the **wrap coat**; the **shirtdress**; the **midriff**; **planned mixing**. . .all in eleven easy pieces that love to travel in a very compatible way.

Pattern No.	Fashion Item	Fabric No. and Content	Price per Yard
8409	Black/white check raincoat	10-0143-08 Cotton/acetate 50"	\$10.00
8252	Black pants	10-0167-13 100% wool double knit 64"	\$10.00
	Red/black/white/gold plaid shirt	11-2127-05 100% nylon 45"	\$ 6.00
	Yellow vest	11-1164-12 100% polyester double knit 60"	\$ 5.00
2745	White shirt	10-0149-09 100% "Qiana" nylon	\$ 6.00
	Plaid skirt	11-2127-05	\$ 6.00
	Black vest	10-0167-13	\$10.00
	Button — Gold sew-through line 30	40-0102-18	\$.35
8252	Red lion print dress	10-0120-05 100% nylon jersey 45"	\$ 6.50
8252	Check skirt	10-0143-08 Cotton/acetate	\$10.00
	White shirt	10-0149-09	\$ 6.00
	Yellow vest	11-1164-12	\$ 5.00
8357	Black midriff	10-0167-13	\$10.00
8252	Black pants	10-0167-13	\$10.00
8252	Plaid shirt	11-2127-05	\$ 6.00
	Yellow vest	11-1164-12	\$ 5.00
	Yellow pants	11-1164-12	\$ 5.00

The Wardrobe Plan ...PUTTING IT ALL TOGETHER

The Wardrobe Plan



Fall '72 Fashion points

- The '72 officer's coat and matching pants in classic plaid... each is compatible with other wardrobe tops and bottoms.
- The short jacket blouse inspired suit... jacket also goes well with plaid pants, tweed skirt, plaid skirt or long suede skirt.
- The classic evening go-togethers in contrasting textures.
- Challis — a No. 1 fabric for Fall in a No. 1 silhouette — the Chemise — a new clean line.
- Mixed media... tweed and plaid in both pieces mix with other elements of wardrobe.
- Just one way of mixing... a basic tweed skirt knows many partners.

THE WARDROBE PLAN . . .

A masterful mix of clothes planned to take you through a season's worth of fashion, to live in and enjoy. . . clean, classic and relating to the contemporary woman. . . '72 inspired but made up of individual pieces in colors that relate to one another and silhouettes that get along with each other. . . and most importantly all planned to be added to and worn for many seasons to come. . . this is the secret of successful wardrobe planning.

NOTE: The chemise done in classic challis; menswear classics with an added bright touch; the important shirt jacket; the new officer's coat; the unlimited ways of mixing made possible with 12 easy pieces.

Pattern No.	Fashion Item	Fabric No. and Content	Price per Yard
2763 & 8352	Brown/red/black Plaid coat and pants	11-5006-27 55% wool 19% nylon 12% polyester 7% cotton 7% acrylic 54"	\$ 6.50
	Buttons — Natural wood dome line 30	40-0161-18	\$.40
2725	Brown ultra suede Battle jacket pant suit	11-1103-25* 60% polyester 40% polyurethane 36"	\$17.00
2725	Buttons — Horn-line 28 Red Washable jersey shirt	40-0115-18 10-0169-14 100% washable wool jersey 54"	\$.30 \$ 8.00
8382	Brown long ultra suede skirt	11-1103-25*	\$17.00
8352	Cream shirt	11-1116-01	\$ 9.00
8352	Black vest	10-0167-19 100% wool double knit 64"	\$10.00
2728	Challis dress	11-5236-19 100% wool 40"	\$10.00
8352	Plaid skirt	11-5006-27	\$ 6.50
	Cream shirt	11-1116-01 100% polyester matte jersey 65"	\$ 9.00
	Tweed Vest	11-5007-27	\$ 6.50
2725	Tweed skirt	11-5007-27 55% wool 19% nylon 12% polyester 6% cotton 8% acrylic 54"	\$ 6.50
2725	Red washable wool jersey shirt	10-0169-14	\$ 8.00

*Note Fabric conversion needed

SPORTIVE CLASSIC

There are many variations to the Classics '72, thus our reason for dividing into three sub-categories. . .

Sportive Classic – Outdoorsy feeling

"Country" Classic – Trim, tailored and casual

Couture Classic – Classic fabrics – in up-to-the-minute couture styling

All are looks enjoyed and loved by the woman who for years has been collecting skirts, pants and blazers in grey flannel, camel's hair, suedes, plaids and tweeds. She enjoys fashion but doesn't want it to shout. Now, the fashion world is finally catching up. . .only with a few '72 twists of course. An easy casual way of dressing for city and country. And as the world "classic" implies, these clothes go on and on . . . in the style of the woman who creates them.

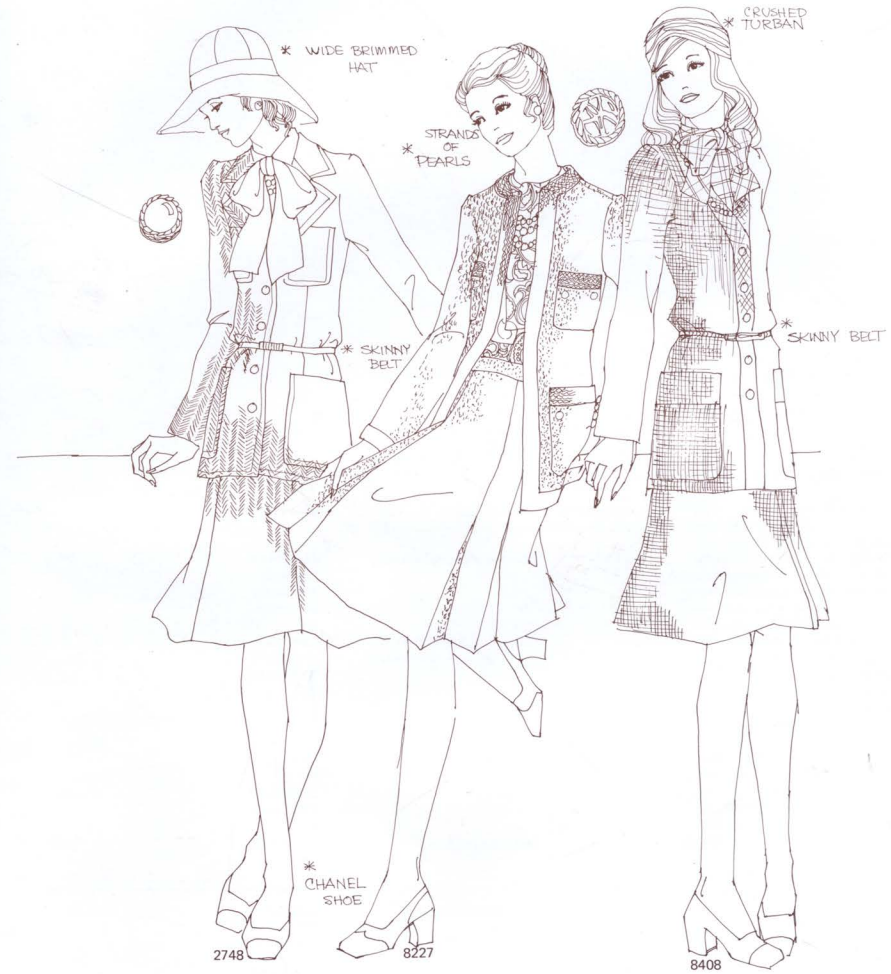
NOTE: The camel/gray brushed knit plaid **shirt jacket**; the new **pea jacket**; the **tent topper**; the new easy-care **ultra-suede**, the bold outdoorsy **trapper's plaid** and the brushed white double knit blend. Jackets + pants. . .jackets + skirts – spell a sportif way of life.

Pattern No.	Fashion Item	Fabric No. and Content	Price per Yard
2747	Navy ultra suede pants	11-1102-25 60% Polyester 40% Polyurethane 36"	\$17.00
	Trapper's plaid topper	11-5140-07 100% wool 54"	\$14.00
	Red double knit top	10-0163-13 100% wool	\$10.00
8410	Grey flannel Pea Coat	11-5001-27 100% wool 56"	\$ 9.00
	Buttons – Grey horn sew-through line 28	40-0117-18	\$.30
8353	Grey flannel pants	11-5001-27	\$ 9.00
8375	Brushed double knit camel/brown plaid shirt jacket	11-3001-26 70% polyester 30% wool 60"	\$ 9.50
	Wood buttons line 36	40-0160-18	\$.30
8204	Camel pleated skirt	11-5170-13 100% wool double knit 64"	\$10.00
8410	Grey flannel pea coat	11-5001-27	\$ 9.00
8204	Brushed flannel double knit white pleated skirt	11-3003-26 55% "Dacron" 45% wool 60"	\$ 8.50



Fall '72 Fashion points

- The '72 great coat... the tent topper.
- Trapper's brushed plaids
- Easy care ultra suede
- Grey flannel reigns
- The go-everywhere Pea coat
- Wear jacket with camel or white skirt and/or pants.
- The shirt jacket
- Brushed plaid
- The new basic — camel pleated skirt
- Camel and white... a Fall winner.



Fall '72 Fashion points.

- Chanel styling + herring-bone in a new fabrication — and pearls of course.
- Mixed media — Chanel style — tweed plus paisley plus pearls and beads.
- The theater suit '72 style... the "color on color" mousseline shirt would also look smashing with a matching skirt.

COLLECTOR'S ITEMS

Clothes that go on and on. Couture-inspired, but worn with an independent spirit. . .simple lines, distinctive fine fabrics, topped off with that one ultimate smashing accessory that distinguishes a look and makes people remember the woman who wears it. She has that special air of confidence and sophistication, giving her a style not locked in by current fashion. . .this is the woman for whom collector's items are geared. Here, it's fabrics that really make the difference.

NOTE: Chanel — the star of the suit market. . .all with new touches. . .the herringbone knit, the silk mousseline shirt — and the color-coordinated tweed, paisley and braid trim number. True collectors might even want to add a long silk mousseline skirt. . .for an added smashing evening look.

Pattern No.	Fashion Item	Fabric No. and Content	Price per Yard
2748	Grey herringbone knit suit	11-5110-24 32% wool 36% cotton 32% rayon 70"	\$14.00
	Buttons — Chanel pearl	40-0163-18	\$.75
	White crepe de chine blouse	10-0104-01 100% Rayon 36"	\$ 9.00
8227	Blue/green tweed suit	11-5241-19 100% wool 54"	\$12.00
	Paisley blouse	11-5240-19* 100% wool 40"	\$10.00
	Matching braid	27-0002-02 100% wool	\$.90
8408	Grey/lurex tweed suit	11-5235-19 89% wool 11% metal 54"	\$13.00
	Blouse	11-5115-24 100% silk mousseline 36"	\$14.00
	Buttons — Chanel gold	40-0106-18	\$.50

*Note fabric conversion needed

COUTURE CLASSIC

There are many variations of the Classics '72, thus our reason for dividing into three sub-categories. . .

Sportive Classic — Outdoorsy feeling

"Country" Classic — Trim, tailored and casual

Couture Classic — Classic fabrics — in up-to-the-minute couture styling

All are looks enjoyed and loved by the woman who for years has been collecting skirts, pants and blazers in grey flannel, camel's hair, suedes, plaids and tweeds. She enjoys fashion but doesn't want it to shout. Now, the fashion world is finally catching up. . .only with a few '72 twists of course. An easy casual way of dressing for city and country. And as the word "classic" implies, these clothes go on and on. . .in the style of the woman who creates them.

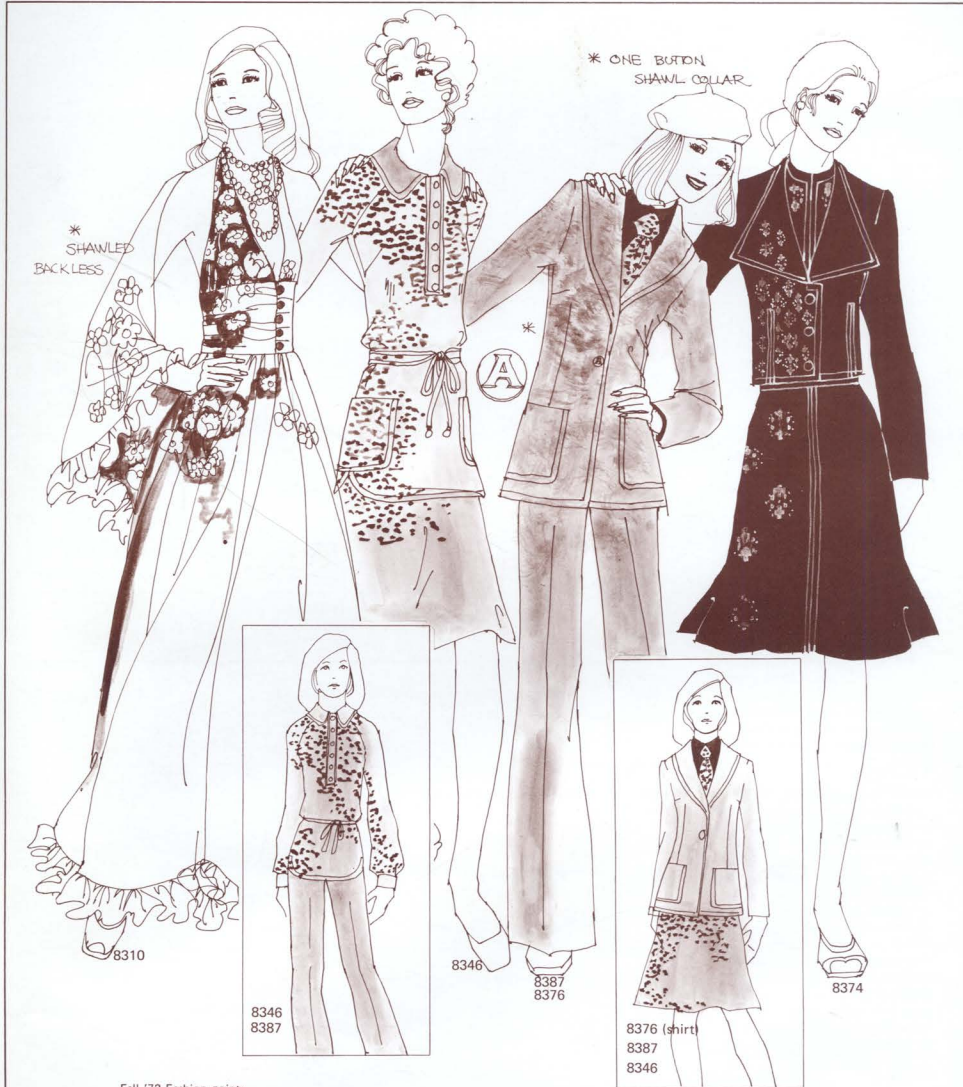
NOTE: The raglan sleeve brown/camel/green classic double-face glen plaid coat that mixes with a lighter weight twin plaid, a coordinated tiny check, a super tweed knit, and brown ultra-suede. . .all making possible unlimited couture classic ways of dressing. . .This plan we think illustrates the ultimate in the new planned way of mixed media dressing.

Pattern No.	Fashion Item	Fabric No. and Content	Price per Yard
2759	Double-faced Glen plaid coat	11-5152-10 77% wool 10% cotton 13% rayon 54"	\$16.00
	Button — Wood sew-through line 36	40-0160-18	\$.30
2759	Green tweed knit top	11-5156-10 60% wool 35% rayon 5% cotton 50"	\$12.00
2759	Brown ultra suede pants	11-1102-25 60% polyester 40% polyurethane 36"	\$17.00
2734	Check vest and skirt	11-5155-10 68% wool 28% rayon 4% cotton 54"	\$11.00
	Button — gold sew-through line 24	40-0101-18	\$.30
	Ultra suede blazer Initial Button	11-1102-25* 40-0133-18-R	\$17.00 \$ 1.00
2759	Glen plaid skirt	11-5154-10 68% wool 28% rayon 4% cotton 54"	\$11.00
	Knit top	11-5156-10	\$12.00

*Note fabric conversion needed



- Fall '72 Fashion points.
- The wrap tie
 - The co-ordinated knit top
 - The check vest and skirt...to wear also with plaid skirt - A blazer to wear with everything.
 - The raglan sleeve
 - The wide-brimmed hat
 - Easy-care ultra suede



- Fall '72 Fashion points.
- The shawl-tail tunic...goes with skirts and pants...tiny motifs very important.
 - The newest blazer look...the one-button shawl collar.
 - Twin prints - ever so practical - very wearable in dress and jacket...a designer fabric...60" wide for extra mileage.
 - The backless look with shawl

SMART MONEY No. 1

Wisely picking and choosing patterns and fabrics that give **fashion and performance** mileage. . . clothes to enjoy a busy life. She cares how she looks but doesn't care to spend the day thinking about it. She's on to the secret of easy care fabrics, knits and co-ordinates. Because she is a smart investor, **easy care, easy mixing, and easy sewing** has become a way of life for her.

NOTE: The extra special 100% easy-care, easy-sew knit story — 60" new dimension knits in fashion/performance blends of **polyester/linen** and **polyester/acrylics**. All a result of editing the finest and most distinctive knits the market has to offer, from classic co-ordinated daytime double knits to Evening/"At Home" jerseys. . .featuring the '72 **shirt tunic**, the **one-button shawl-collar blazer**; the new **twin print dress and jacket**; and, the **backless dress** with ruffled **shawl**. And don't forget the mixing possibilities. . . for extra fashion mileage.

Pattern No.	Fashion Item	Fabric No. and Content	Price per Yard
8310	Long navy flower print dress	11-3129-05 100% acetate 54"	\$ 7.00
8346	Grey small motif skirt and tunic	11-2174-13 91% Polyester 9% linen 62"	\$ 8.50
8387	Grey rib knit blazer and pants	11-2175-13 86% polyester 14% linen 62"	\$ 8.50
8376	Red jersey shirt	10-0169-14 100% washable wool jersey 54"	\$ 8.00
	Initial Button-line 36	40-0133-18-A	\$ 1.00
8374	Navy/gold print dress and jacket	11-3151-10 wide space print 80% polyester 20% acrylic 60" 11-3152-10 small print 80% polyester 20% acrylic 60"	\$ 8.50 \$ 8.50

COLLECTOR'S ITEMS

Clothes that go on and on. Couture-inspired, but worn with an independent spirit. . .simple lines, distinctive fine fabrics, topped off with that one ultimate smashing accessory that distinguishes a look and makes people remember the woman who wears it. She has the special air of confidence and sophistication, giving her a style not locked in by current fashion. . .this is the woman for whom collector's items are geared. Here, it's fabrics that really make the difference.

NOTE: No one will be able to resist "Dacron"/Cashmere whether for a one yard skirt, or for a complete ensemble. Cashmere blended with silk in a camel and white print too makes for a very wearable "live-in" type of dress — with the right accessories it will no doubt go many places. And everyone will want at least one pair of black matte jersey evening pajamas. . .so flattering, . . .in a look that will go on for many seasons.

Pattern No.	Fashion Item	Fabric No. and Content	Price per Yard
2750	Wrap coat	11-5001-23 50% "Dacron" 50% cashmere 58"	\$18.00
8325	Skirt	11-5002-23 50% "Dacron" 50% cashmere 58"	\$14.00
2731	Black jersey evening pajamas	11-1117-10 100% polyester matte jersey 65"	\$ 9.00
2505	Camel/white print dress	11-0040-02 65% silk 35% cashmere 36"	\$20.00



RENAISSANCE
* INSPIRED
PENDANT

2505

*
MATCHING
SKIRT

2750
8325

* SOFT
AND
SLINKY

2731

Fall '72 Fashion points.

- The understated wrap coat in non-perishable Dacron/cashmere. Wear over dyed to match cardigan and pullover.
- A simple yet luxurious dress... wear with a great pin and beads.
- Evening pajamas make a comeback. For evenings at home or out... note very wide legs in soft slinky jersey.



* PLEATED
SHIRT
DRESS

* VERY TAILORED
SHIRT



8232
8224

8232

8232

8198
8232

* CHILLIES
(shirt) 8224

* NEW PUMPS...
THE PLATFORM

Fall '72 Fashion points

- Planned separates in a very new color combination.
- The very tailored shirt vest goes with coordinated pants too.
- The blazer and skirt — a must for Fall meant for unlimited planned mixing. Wear with ghillies.
- The No. 1 dress for Fall — note stitched down pleats. — Wear with vest for a '72 touch — Wear a super elegance letter buckle. — The new platform pumps

"COUNTRY" CLASSIC

There are many variations of the Classics '72, thus our reason for dividing into three sub-categories. . .

Sportive Classic – Outdoorsy feeling
"Country" Classic – Trim, tailored and casual

Couture Classic – Classic fabrics – in up-to-the-minute couture styling

All are looks enjoyed and loved by the woman who for years has been collecting skirts, pants and blazers in grey flannel, camel's hair, suedes, plaids and tweeds. She enjoys fashion but doesn't want it to shout. Now, the fashion world is finally catching up. . .only with a few '72 twists of course. An easy casual way of dressing for city and country. And as the word "classic" implies, these clothes go on and on. . .in the style of the woman who creates them.

NOTE: Blazer + pants; blazer + skirt; skirt + vest and/or blazer; dress + vest. . .in a most unusual green/peach plaid and solid coordinate lightweight flannel combination – all adding up to unlimited ways of sophisticated country-inspired dressing – that goes well in the city too.

Pattern No.	Fashion Item	Fabric No. and Content	Price per Yard
8232	Predominantly peach plaid skirt and vest	11-5113-24 100% wool 56"	\$14.00
8232	Predominantly green plaid blazer and pants	11-5112-24 100% wool 56"	\$14.00
8224	White crepe de chine shirt	10-0104-01 100% Rayon 36"	\$ 9.00
8198	Green flannel shirt dress	11-5111-24 100% wool 56"	\$13.00
	Letter buckle – line 24	45-0104-18-R	\$ 2.50

SMART MONEY NO. 2

Wisely picking and choosing patterns and fabrics that give **fashion and performance** mileage. . . clothes to enjoy a busy life. She cares how she looks but doesn't care to spend the day thinking about it. She's on to the secret of easy care fabrics, knits and coordinates. Because she is a smart investor, **easy care, easy mixing, easy sewing** has become a way of life for her.

NOTE: The ultimate easy care/ fashion story brought to life in the **smock story**; the **planned layered look** with the **classic argyle touch**; and the long Evening/"At Home" non-traditional plaid. Wise investors will take advantage of the mixing possibilities here too.

Pattern No.	Fashion Item	Fabric No. and Content	Price per Yard
2752	Argyle jacket and	11-1165-12 100% acrylic double knit 64"	\$ 6.50
	Heather jumper	11-1166-12 100% acrylic double knit 64"	\$ 7.00
	Buttons —Grey smoked tortoise — line 36	40-0122-18	\$.40
8382	Heather double knit pants	11-1166-12	\$ 7.00
	White polyester shirt	10-0159-12 100% polyester 60"	\$ 6.00
	Argyle vest	11-1165-12	\$ 6.50
8389	Green/gold plaid dress	11-1167-12 100% acrylic double knit 64"	\$ 7.00
8396	Long aqua/white/black plaid dress	11-2128-05 100% "Antron" nylon 45"	\$ 6.00



Fall '72 Fashion points

- Many fashion points here — the smock jacket, the argyle plaid, the jumper... for extra mileage — wear jacket with pants too.
- Layered dressing — all easy care — with many mix possibilities.
- The easy dress in soft easy-care Acrylic — note '72 detailing, the drawstring waist.
- The new non-traditional plaid — for at home or away... extravagant ruffles at a non-extravagant price.



Fall '72 Fashion points

- The jumper makes a fashion comeback for Fall '72.
- Note the cardigan jacket and dress — very important for Fall.
- Evening Classics... classic camel with a touch of "gold."
- Black double knit plus red/white challis. One of the greats in fabric and design... for a very special woman.

VERY SPECIAL

Planned for the woman who sometimes finds it difficult to find the right look to fit her figure. The answer. . .slimming looks in up-to-the-minute fabrics and styles, styled especially for her. . .that's why they're very special.

NOTE: The Jumper, the cardigan dress and jacket and the evening classics. . .all in keeping with the '72 fashion story.

Pattern No.	Fashion Item	Fabric No. and Content	Price per Yard
8392	Green/white pin stripe short jumper	11-5004-27 93% wool 7% acrylic 54"	\$ 7.00
8392	White Blouse	10-0149-09 100% Qiana nylon	\$ 6.00
8350	Brown/camel striped double knit jacket	11-5179-13 64% wool 36% polyester 62"	\$10.00
	Buttons — Brown shell — line 30	40-0119-18	\$.35
	Solid double knit brown dress	11-5172-13 100% wool 64"	\$10.00
8367	Long camel/white plaid jumper	11-5243-19 89% wool 7% metal 4% mohair 54"	\$12.00
2758	Black double knit tunic	10-0167-13 100% wool 64"	\$10.00
	Red print challis dress	11-5130-02* 100% wool 36"	Not available at press time

*Note fabric conversion needed